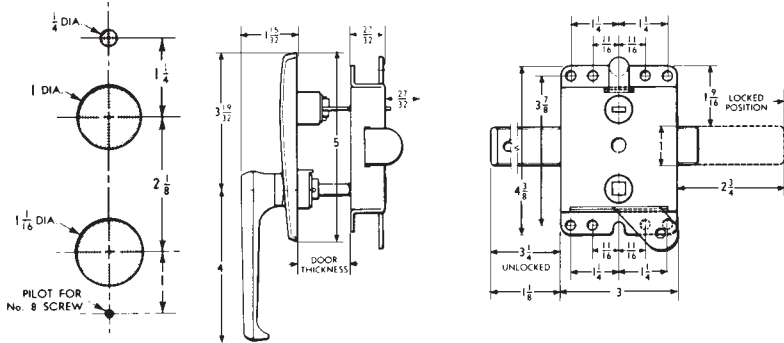
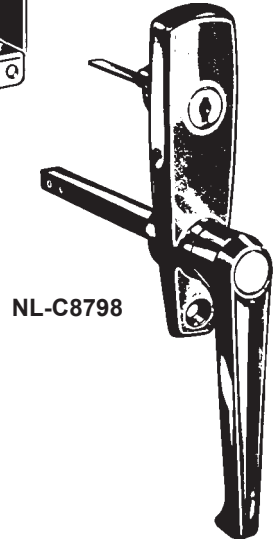
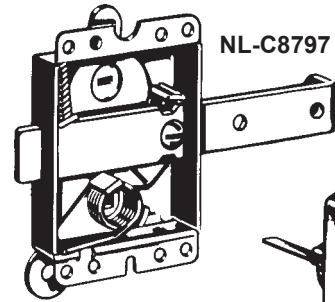


# GARAGE DOOR LOCKS

## GARAGE DOOR MECHANISM-LOCKING HANDLE



**Mounting Holes  
for Handle**



**APPLICATION**—For mounting on sectional over head doors. Factory assembled for right hand mounting. Mechanism installs at right side of door (inside garage) to lock into track. Handle can replace Overhead Door locking handles. Mechanism can be reversed for left hand application.

**OPERATION**—Turning key releases mechanism, unlocking door. Handle turns down to vertical position. Turn handle to horizontal to lock door. Key removable in both locked and unlocked positions.

**KEYING**—Keyed different only. 10 changes only.

**FINISHES**—2C-Zinc Plated, 26-Bright Chrome

**PACKAGING**—NL-C8798 supplied with two keys and mounting screws. NL-C8797 furnished with mounting screws.

<u>Stock No.</u>	<u>Installation</u>	<u>Operation</u>	<u>Key Blank</u>
NL-C8797-2C	Inside door near track.	Sliding bolt locks into track.	—
NL-C8798-26	Outside door over mechanism	Key releases mechanism, handle locks mechanism	D8785